

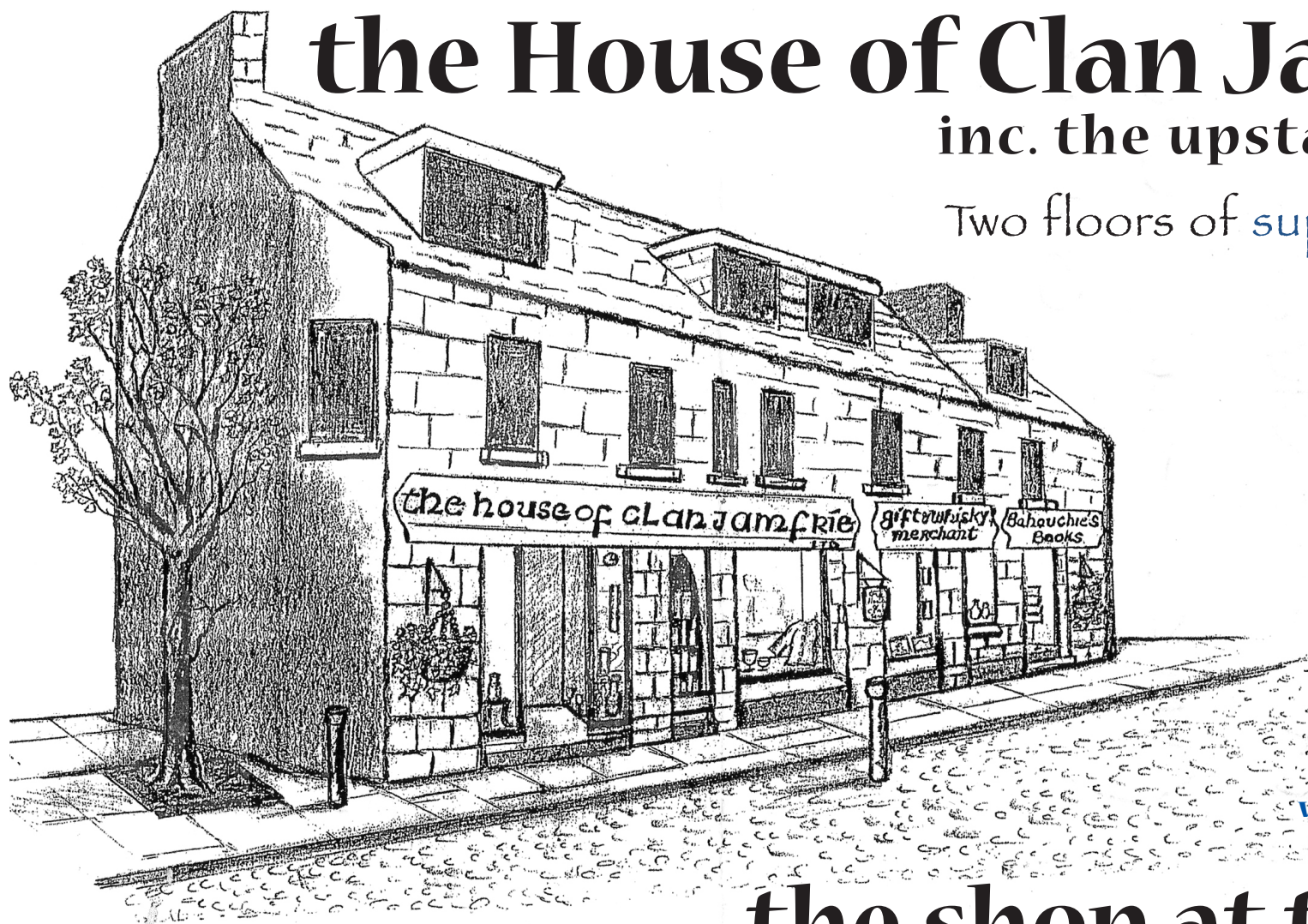
# WEST HIGHLAND WAYFARER

91027  
www.westhighlandwayfarer.co.uk



Satisfaction for young Harris Williamson as he contemplates his achievement. He covered the 96 miles of the West Highland Way on his unicycle in just three days.

**Plus: The Great Glen Wayfarer**



**the House of Clan Jamfrié**  
inc. the upstairs gallery  
Two floors of *superb* shopping

129 High Street  
Fort William  
Scotland  
Tel: 01397 704406  
[www.clanjamfrie.com](http://www.clanjamfrie.com)

**the shop at the end**



## CRIANLARICH HOTEL



At the midway point on the West Highland Way you deserve a break. We offer you a warm welcome and excellent facilities. Fully licensed, we are open to non-residents for all meals, we have free WiFi, comfortable log fires, an excellent boot-room and a small but tempting bookshop.

All rooms are en suite and fully bookable on line – please see us at:  
[www.criannlarich-hotel.co.uk](http://www.criannlarich-hotel.co.uk) • e: [info@criannlarich-hotel.co.uk](mailto:info@criannlarich-hotel.co.uk)

## The Story of the West Highland

*The 1940s LNER guide to the line reprinted, with additional colour illustrations*  
Northern Books from Famedram £4.95  
[www.northernbooks.co.uk](http://www.northernbooks.co.uk)



### THE OAK TREE INN

Muddy Boots Welcome

#### Special Offers

Visit our website and sign up for a newsletter to receive special offers. Currently all of our rooms are half price until just before Christmas (see website for full terms).



#### Christmas at The Oak Tree

Our Festive menu is available from 1st to 24th December. We also have Christmas gifts and vouchers for sale. See website for more details.



#### New Year at The Oak Tree

See in the new year at The Oak Tree, book our Hogmanay 'Bubbly' at the Bell's accommodation and dinner package. Call for more details.



#### St Mocha Coffee Shop

Keep warm this winter at St Mocha with artisan roasted coffee and speciality teas. We also offer home baking and have a lunch time menu that includes stone based pizzas.



Tel: 01360 870357 | Email: [info@theoaktreeinn.co.uk](mailto:info@theoaktreeinn.co.uk)  
[www.theoaktreeinn.co.uk](http://www.theoaktreeinn.co.uk)



@oaktreebalmaha



Facebook.com/theoaktreeinn

## the DROVERS inn

EST 1705

The Drovers Inn is an original droving inn and has been offering hospitality to those travelling up and down the banks of Loch Lomond for over 300 years and in that time has bore witness to many of the most historic events in Scottish history.

Situated close to the WHW, The Drovers Inn is an ideal stopping point to rest and re-fuel after a hard days walking and enjoy a dram or two.



Open all year (except Xmas Eve and Xmas Day) / 30 bedrooms (14 in the Inn, 16 in the Lodge). See website for room types and tariffs / Seasonal rates / Winter rates available from October to March / Discounted rates for longer stays / Book on our website or by phone / Dogs welcome / Car parking / Food served all day / Breakfast available for non-residents / Friendly bar with open fire / Packed lunches available / Large parties catered for / WiFi Available / Live entertainment (see website/notice board for details) / Luggage drop off point

The Drovers Inn & Drovers Lodge, Inverarnan, Glasgow, G83 7DX  
t: 01301 704234 w: [www.thedroversinn.co.uk](http://www.thedroversinn.co.uk) e: [info@thedroversinn.co.uk](mailto:info@thedroversinn.co.uk)

Like us on Facebook: [facebook.com/DroversScotland](https://www.facebook.com/DroversScotland)  
Follow us on Twitter: [twitter.com/DroversScotland](https://twitter.com/DroversScotland)



# A new hazard for walkers...



THE WALKER on the West Highland Way has, on the whole, a pretty gentle introduction to the dangers that lie ahead, but this sign seen in recent years just outside the village of Drymen at the southern end of Loch Lomond, promises an unusual hazard.

Over the years the route taken by the Way has been made increasingly hazard free, partly in response

to the sheer pressure of numbers on this the most popular of the long distance walks.

From time to time diversions need to be introduced, be it to avoid danger or simply to allow restorative work to take place.

Watch out for warning signs and do take heed of them. Further into the hills real danger can lurk.

## Rose Cottage, Bed & Breakfast



- 1 Double/Twin room – en suite.
- 1 Twin Room – en suite.
- 1 Double/Twin – private.
- All rooms with TV Tea & Coffee
- Free WiFi
- All rooms £35.00 per person
- Breakfast Included
- Single occupancy £50

Mrs Muriel Martin • Rose Cottage • Inverarnan  
By Ardlui Dunbartonshire • G837DX  
Tel: 01301 704255 • Email: [murielrosecottage@hotmail.com](mailto:murielrosecottage@hotmail.com)

## TRANSCOTLAND - self-guided walking holidays

We arrange all the accommodation and baggage transfer each day, leaving you to enjoy the scenery at your own pace.

- West Highland Way
- Coast to Coast
- Great Glen Way
- Highland Perthshire
- Glen Affric
- Rob Roy Way



TRANSCOTLAND, 5 Dunkeld Road, Aberfeldy, PH15 2EB.  
Tel 01887 820848 [www.transcotland.com](http://www.transcotland.com)



CRUISE LOCH LOMOND  
ESTABLISHED 1973

RELIABLE and SCHEDULED FERRY & WATERBUS SERVICE  
Friday 18th March till Sunday 30th October 2016

INVERNAID – TARBET – INVERNAID  
ROWARDENNAN – TARBET – ROWARDENNAN  
ROWARDENNAN – LUSS – ROWARDENNAN



[WWW.CRUISELOCHLOMOND.CO.UK](http://WWW.CRUISELOCHLOMOND.CO.UK)  
OR CALL US ON 01301 702 356



[www.mugdock-country-park.org.uk](http://www.mugdock-country-park.org.uk)

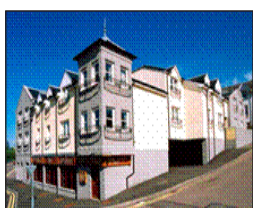


Over 750 acres of  
beautiful semi  
natural countryside  
is waiting for you..  
Tel: 0141 956 6100





BT call boxes which actually contain phones are, sadly, becoming an ever rarer fixture in the countryside. Where there is plentiful cellular coverage this is not, maybe, such a loss, but in many parts of the Highlands there is no signal – so even a box shared with greenery, such as this one in Glen Nevis, is a welcome, if unusual sight.



**BANK STREET LODGE  
STABLES  
RESTAURANT  
FORT WILLIAM  
(01397) 700070**

Situated in town centre with a variety of accommodation including dormitory rooms and double, twin and family en-suite rooms – close to bus and train stations.

Ideal situation for walkers, hikers etc. TV Lounge, Drying Room and use of kitchen for self-prepared meals also available. **WI-FI ZONE NOW AVAILABLE**

e-mail: [bankstreetlodge@btconnect.com](mailto:bankstreetlodge@btconnect.com) • [www.bankstreetlodge.co.uk](http://www.bankstreetlodge.co.uk)



**GLENFINNAN  
STATION  
MUSEUM**

01397722295

[www.glenfinnanstationmuseum.co.uk](http://www.glenfinnanstationmuseum.co.uk)

**Open Easter - Oct, 9 am - 5 pm**

Picturesque railway museum with Dining Car tearoom, signal box studio and viaduct trail

To find out more about advertising in the WEST HIGHLAND WAYFARER, why not visit [www.westhighlandwayfarer.co.uk](http://www.westhighlandwayfarer.co.uk) or E-mail us at: [info@famedram.com](mailto:info@famedram.com)

# Jo-Jo's Hostels

Planning on tackling the mighty West Highland Way or conquering the Great Glen Way?

**Why not stay in Jo-Jo's Hostels?**

Situated in central locations close-by to both walks, our friendly hostels have everything you will need after a great days walking.

Our hostels have great showers, laundry facilities, comfy beds and award winning staff.

You can relax in front of real coal fires and drink as many free hot drinks as you like while you use our free WiFi to tell others of your adventures.



**Inverness  
Student  
Hotel**

+44 (0)1463 236 556

[info@invernessstudenthotel.com](mailto:info@invernessstudenthotel.com)

[www.invernessstudenthotel.com](http://www.invernessstudenthotel.com)



**FORT WILLIAM  
BACKPACKERS**



+44 (0)1397 700 711

[info@fortwilliambackpackers.com](mailto:info@fortwilliambackpackers.com)

[www.fortwilliambackpackers.com](http://www.fortwilliambackpackers.com)



Visit us on Facebook or follow us on Twitter



**CHECK OUT  
OUR OTHER  
TITLES**

**artWORK**  
[www.artwork.co.uk](http://www.artwork.co.uk)

**THE Whisky  
Trailer**  
[www.whiskytrailer.co.uk](http://www.whiskytrailer.co.uk)

[www.northernbooks.co.uk](http://www.northernbooks.co.uk)

## Ben Nevis Distillery

(Fort William) Ltd.



Our Visitor Centre incorporates a permanent exhibition, a Video Programme featuring Hector McDram a snack bar and shop.

**OPEN ALL YEAR**

Monday to Friday 9am - 5pm

Easter to September - Saturday 10am - 4pm

July to August - Monday to Friday 9am - 6pm

Saturday 10am - 4pm. Sunday 12pm - 4pm

October to Easter - Saturday, Sunday and Evenings by arrangement

**BEN NEVIS DISTILLERY (FORT WILLIAM) LTD.,**

Lochy Bridge • Fort William • PH33 6TJ

Tel: 01397 702476 • Fax: 01397 702768



## BY THE LOCH SHORE NEAR KINLOCHLEVEN

### CAOLASNAON

KINLOCHLEVEN PH50 4RJ  
(01855) 831279

- Caravans to let • Touring caravan and campsite facilities •
- South shore road 3 miles •
- On bus route from Kinlochleven •

## Glen Nevis Caravan and Camping Park

Our award winning park is perfectly situated between the foot of **Ben Nevis** and the final leg of the **West Highland Way**.

We offer clean, modern, well equipped facilities including our very own on-site **restaurant** serving delicious **burgers** and real Scottish ales.

[www.glen-nevis.co.uk](http://www.glen-nevis.co.uk)

holidays@glen-nevis.co.uk 01397702191  
Glen Nevis Holidays Ltd., Glen Nevis, Fort William, PH33 6SX

To find out more about advertising in the **WEST HIGHLAND WAYFARER**, why not visit [www.westhighlandwayfarer.co.uk](http://www.westhighlandwayfarer.co.uk) or E-mail us at: [info@famedram.com](mailto:info@famedram.com)

## STOBAHN BED & BREAKFAST

Stobahn B&B is situated just above Fort William High Street with views overlooking Loch Linnhe. 4 mins walk from bus and train stations.

1 Family en-suite, 2 double en-suite, 2 twin en-suites, 1 standard double and a single available.

Prices from £28-00 to £37-50 per person per night.

Fassifern Road • Fort William • PH33 6BD  
[www.stobahnguesthouse.co.uk](http://www.stobahnguesthouse.co.uk)  
Tel: 01397702790 • E-mail: [boggi@supanet.com](mailto:boggi@supanet.com)

## Lose weight overnight

Daily Door to Door Baggage Transport on the West Highland Way, the Great Glen Way, St Cuthberts Way and all Britains long distance trails. Between Hotels, B&Bs and Campsites, April to October.

Trail planning and Hotel reservations

We can help you plan your journey and book your accommodation for you.

Visit our Website for full details.  
[www.sherpavan.com](http://www.sherpavan.com)  
or Tel: 01748 826917

Enjoy the trail without having to carry your baggage

# Race against time...

NOT FOR NOTHING is the Fort William area known as the outdoor capital of the UK. Besides being the ultimate destination of its most popular long distance walk, it boasts an enormous variety of outdoor attractions during the season.

For those who have first hand experience of walking even part of the Way, probably the most daunting event is the West Highland Way Race. This year this is due to take place on June 18th.

A rigorously selected group of runners depart in the wee small hours from the Way's starting point in Milngavie and end up – most of them – anything up to 35 hours later in Fort William. The record, broken successively for the past three years by the same runner, Paul Giblin, now stands at an incredible 14 hours and 14 minutes.

Holder of the women's record is Kate Jenkins who recorded a time of just over 19 hours back in 2011. If running the whole route sounds too much to contemplate there are plenty of other challenges to consider.

Earlier in the season, and earlier on on the route of the Way, is the Ben Lomond Hill Race. This is scheduled for May 7. At the end of the Way (and now officially another metre higher!) the race up Ben Nevis is due to take place this year on September 3.



A century back a weather station was maintained on the summit of Ben Nevis. (Illustration from: "Ben Nevis and its Observatory")

along part of the Way is the Caledonian Challenge. This charity event actually comprises two team races known as The 54 and The 24. Both start at the northern end of the Way on June 11.

The 54 (54 miles) starts at Gairloch on the Great Glen Way and is scheduled to finish the following day at Strathfillan. The 24 (24 miles) gets away from Fort William itself and finishes the same day in Glencoe.

The week before this one of the most dramatic mountain bike events, the UCI Mountain Bike World Cup, is fought for in the hills above Fort William on June 4 and 5.

Still on two wheels, but with the benefit of an engine to power them, competitors in the renowned Scottish Six Days Trial battle it out in a whole variety of events on the roads and tracks around Fort William from May 2 - 7. Start and finish for all these events is the West End Car Park in Fort William.

For a less strenuous day out – unless you feel like competing – there are a number of Highland Games

held throughout the area. They include the Lochaber Games (usually held on the last Saturday in July), the Arisaig Highland Games (July 27), the Mallaig & Morar Highland Games (August 7) and the Glenfinnan Gathering (August 20).

NB: Entries for the main events listed close many months beforehand. Details from the individual websites.

## THE RIVERSIDE CHIPPY

WOULD LIKE  
TO WELCOME  
YOU TO  
KINLOCHLEVEN

Come and enjoy our range of freshly cooked takaway foods



Riverside Road,  
Kinlochleven PH50 4QH  
Tel: 01855 831349

## CRANNOG SEAFOOD RESTAURANT FORT WILLIAM



"Absolutely delicious food and delightful staff."  
LUCILLE AND JIM, NOVEMBER 2015



Open 7 days: Lunch from 12noon - 2.30pm  
Evening Meals from 6pm - 9.30pm

Town Pier, Fort William,  
PH33 6DB

To book call  
01397 705589

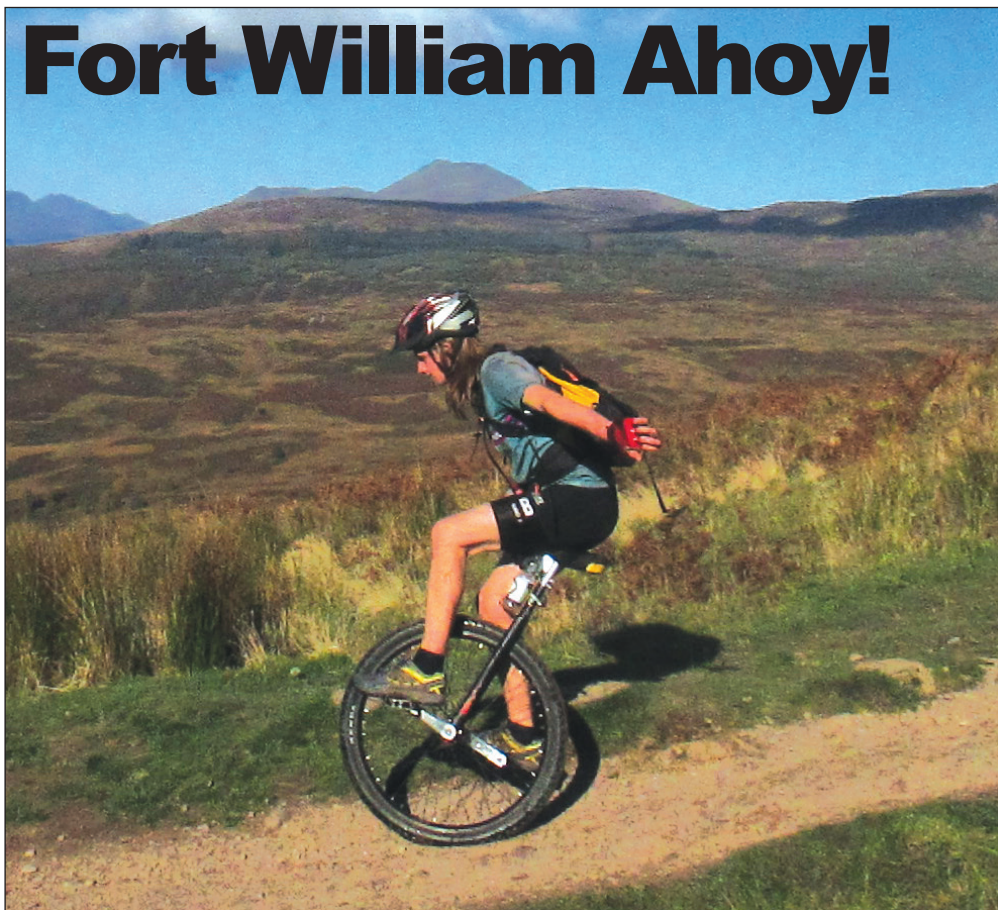
[www.crannog.net](http://www.crannog.net)

[f](#) [t](#) [tripadvisor](#)

Bring your  
Wayfarer for a  
**Free Coffee**  
after your meal



# Fort William Ahoy!



FULL SPEED ahead for Harris Williamson, who last year completed the 96 miles route of the West Highland Way on his unicycle.

Harris, from Huntly, undertook the challenge to raise funds for the charity Networks of Wellbeing. He completed the course over three days, spending a total of 23 hours in the saddle.

Of the ordeal he said: "The toughest part

must have been the top of Loch Lomond, it was very hard going on both myself and the unicycle, and I had to carry it for some very tough sections.

"On a whole it was really very enjoyable. It is a trail I have walked before and done sections many times, and it seemed aptly absurd as a way to raise awareness and catch peoples' attention."

## Karol Lentas Builders Ltd

All General  
Building Work  
Undertaken

www.kklbuilding.com  
+44 (0) 77 66 60 40 62

**01651 843 246**

kkbuilding@mail.com

### HIGHLAND STEAM

A Scrapbook of images from the Kyle, Mallaig and Highland lines - Large format paperback, with 160 pages of glorious colour pictures of steam in a Highland setting

# 978 0905489 90 2 - Price : £9.99



Northern Books from  
Famedram  
www.northernbooks.co.uk

## THE ROD AND REEL

Lounge Bar & Restaurant

Main Street, Crianlarich FK20 8QN  
Telephone and Fax (01838) 300271

Long regarded by climbers and walkers as a popular rendezvous, the Rod & Reel is a family-run bar and restaurant.

You can find good food and a relaxing drink in our friendly and comfortable atmosphere. We are open all year, and invite walking/fishing clubs to ring



Lesley or Liz to book for that special occasion.

## THE HAWTHORNS

Bed and Breakfast in the heart of Drymen

All rooms ensuite

Free WiFi

Free Parking

Muddy boots welcome

Packed lunches available

Free drying facilities

**01360 661 222**

www.hawthorns-drymen.com

stay@thehawthorndrymen.com

## GLENBURN GUESTHOUSE FAMILY RUN BED & BREAKFAST

Open all year

All bedrooms en-suite, free Wi-fi

Parking available

19 Castle Street, Huntly AB54 8BP

**Telephone: 01466 792798**

E-mail: glenburnguesthouse@fsmail.net

www.glenburnguesthouse.co.uk

## 24/7 Cars Crianlarich Private Hire

DEMAND RESPONSIVE TRANSPORT (DRT)

On behalf of Stirling Council, 24/7 Cars operate DRT within the boundaries of Tyndrum, Inverarnan, Killin and Ardeonaig. DRT hours of service :- 07:00 - 21:30 Mondays to Saturdays. (No Sunday service)

This service MUST BE PRE BOOKED, officially 24 hours notice, although we will try to accommodate short notice bookings where possible. When booking this service, it must be stated that it is a DRT that is required.

**For all other hires outwith DRT**  
**All hires MUST BE PRE BOOKED.**  
**Due to the lack of driver resources,**  
**services between the hours of 23:00**  
**and 07:00 will be severely restricted.**

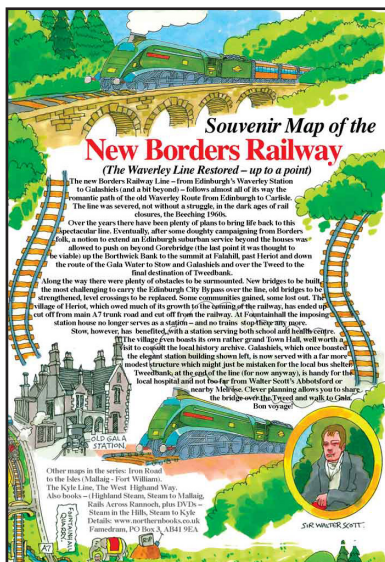


**Booking office hours 07:00 - 23:00**

Tel: 0183820721 • Email: info@247taxis.co.uk • www.247taxis.co.uk

## Self Guided Walking Holidays in the UK

**HILLWALK  
TOURS**  
hillwalktours.com



The New Borders  
Railway Souvenir Map...  
...has proved a runaway success.

Shops in the area served have placed repeat order after repeat order.

The £2 map is proving an equally popular gift, its A4 folded format making it easy to post.

To order a single copy, sent First Class Post, send £3.50; two copies: £5.00;

Special Offer: 3 Different Rail Maps (Borders, Kyle and Mallaig maps) sent first class mail: £5.00 (inland post only).

Enclose cheque (to Famedram Ltd)/PO

or stamps value £.....

Send to Famedram, PO Box 3, Ellon, AB41 9EA

(TO ORDER ONLINE, go to [www.northernbooks.co.uk](http://www.northernbooks.co.uk) or [www.newbordersrailway.com](http://www.newbordersrailway.com))

## BEINGLAS CAMPSITE

We're on the way!



### Lounge Bar and Restaurant

Our popular bar on the WHW serves delicious food all day

### Bed and Breakfast chalets

Relax and enjoy the views on the veranda.. All rooms en-suite

### Shop and Outdoor Store

Well stocked with groceries, camping & out door equipment

### Wigwams

Warm cosy camping cabins sleeping up to 4 persons in each

### Camping- Outdoor shelter- Laundrette

Beinglas Campsite Inverarnan

Loch Lomond Dunbartonshire G83 7DX

Tel 01301 704 281

[WWW.beinglascampsite.com](http://WWW.beinglascampsite.com)

E-mail: [info@beinglascampsite.com](mailto:info@beinglascampsite.com)

Proprietors: Tim & June Palmer

## INVERARDRAN HOUSE

CRANLARICH FK20 8QS

SELF  
CATERING

Open All Year  
from £30 pppn, en suite available  
CONTINENTAL AND FULLY COOKED

BED &  
BREAKFAST

SCOTTISH BREAKFASTS PROVIDED • PACKED LUNCHES

DRYING FACILITIES • PICK UP AND DROP OFF

Euros welcome

Evening meal available

Please contact Janice & John Christie

T:(01838) 300240 • M: 07979 690004

[janice@inverardran.demon.co.uk](mailto:janice@inverardran.demon.co.uk) • [www.inverardran.co.uk](http://www.inverardran.co.uk)



## ARDLUI HOTEL

MARINA AND HOLIDAY HOME PARK

Ardlui, Loch Lomond, Argyll G83 7EB

Office: 01301 704 243/269 Fax: 01301 704 268

[info@ardlui.co.uk](mailto:info@ardlui.co.uk) [www.ardlui.co.uk](http://www.ardlui.co.uk)

The Ardlui Hotel is a warm and comfortable country house hotel, with a relaxed and friendly atmosphere, with 10 comfortable en-suite bedrooms

LOUNGE • RESTAURANT • BAR MEALS • PUB

Boots cleaned & dried. Packed lunches available

The Ardlui Holiday Home Park with camping facilities is adjacent to the hotel, with shop, laundry and showers. Ardlui has a railway station and bus stop.

ARDLEISH - ARDLUI FERRY - HOIST THE BALL TO CALL FERRY

APRIL/SEPT/OCT 9AM - 5PM MAY/JUNE/JULY/AUG 9AM - 7PM

OUT OF SEASON & OTHER TIMES BY SPECIAL ARRANGEMENT

WITH ARDLUI HOTEL - GIVE US A CALL



*This amusing and informative specially drawn map of the West Highlands covered. Copies are available from outlets on the way or send £2.00*





© Famedram Publishers Ltd

land Way contains a wealth of weird and wonderful data on the area (cheque or postage stamps) to: Famedram PO Box 3 Ellon AB41 9EA

**MACS ADVENTURE** WEST HIGHLAND WAY WALKING HOLIDAYS  
DELIVERING ADVENTURE EXCELLENCE

- READ 300+ REVIEWS ONLINE
- 10 YEARS OF WHW HOLIDAYS
- B&B OR HOTEL ACCOMMODATION
- DOOR TO DOOR BAG TRANSFER
- NO. 1 FOR SELF GUIDED WALKS
- CHOOSE FROM 9 ITINERARIES

SPECIALISING IN SELF GUIDED WALKING HOLIDAYS & TAILOR MADE ADVENTURES

**ABTA** TO BOOK: VISIT [WWW.MACSadventure.com](http://WWW.MACSadventure.com)  
ABTA No. Y2210 CALL OUR SPECIALISTS ON: **0141 530 3668**

### STRATHFILLAN WIGWAMS & CAMPSITE

open all year



On WHW 11/2 miles south of Tyndrum  
£15 per person per night. Under 15s  
£10 per night. Kirkton Farmhouse available  
for groups up to 14. Luxury camping in  
wigwams, yurts and lodges.  
Pitches also available.  
Self catering facilities.  
Farm Shop on site Breakfast available.  
Superb mountain views.

E-mail: [wigwam@sac.ac.uk](mailto:wigwam@sac.ac.uk)  
Website:  
[www.sac.ac.uk/wigwams](http://www.sac.ac.uk/wigwams)  
Tel: 01838 400251



**Open 7 days, 7.30am-6pm**  
A friendly, exceptionally  
well stocked licensed mini-  
supermarket. Also first aid  
and outdoor essentials and  
an ATM (accepts all cards).

Station Road Crianlarich FK20 8QN  
[www.crianlarichstore.co.uk](http://www.crianlarichstore.co.uk)  
FaceBook: [LondisCrianlarichStore](https://www.facebook.com/LondisCrianlarichStore)  
Tel: 01838 300245

### Brodie's

Mini market

We are situated in Tyndrum and on the  
west highland way !!  
LAST SHOP BEFORE KINLOCHLEVEN 43 KM

POST OFFICE  
FOOT CARE & SOCKS  
CAMPING GAS  
HOT & COLD DRINKS  
HOT SNACKS  
GROCERIES  
WALKING POLES  
ENERGY DRINKS  
MAPS & POSTCARDS  
PHONE TOPUP  
WINES, BEERS & SPIRITS  
FRUIT & VEG  
MEDICINES & FIRSTAID

Shop@gabrodie.co.uk

01838 400275

[www.gabrodie.co.uk](http://www.gabrodie.co.uk)

### PINETREES LEISURE PARK

Tyndrum, Perthshire  
FK20 8RY

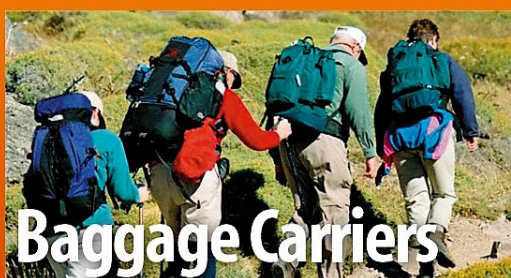
HIKERS HUTS - CARAVANS

- LOG CABIN FOR UP TO 6 PEOPLE - CAMPING -  
MODERN TOILET BLOCK - LAUNDRY - PLAY PARK

ALL FULLY SERVICED PITCHES

TELEPHONE 01838 400 349

[WWW.ENQUIRIES@PINETREESCARAVANPARK.CO.UK](mailto:WWW.ENQUIRIES@PINETREESCARAVANPARK.CO.UK)



### Baggage Carriers

AMS Scotland has been providing a luggage transfer service to  
walkers on the West Highland Way for many years.

We deliver/pick up your luggage from all of your accommodations  
every day of your walk. You can join us at any stage, and there are no  
limits to the number of stops you can make along the way.

We guarantee to

- Deliver Direct to All Accommodations
- Deliver/Uplift to and from Inversnaid
- Deliver Direct to your accommodation in Fort William

REVERSE ROUTE SERVICE FT WILLIAM-GLASGOW

ALSO AVAILABLE ON REQUEST.

• Secure & Fast • Fully Insured

**AMS**  
WEST HIGHLAND WAY  
BAGGAGE TRANSFER



[www.amsscotland.co.uk](http://www.amsscotland.co.uk)

Tel - 01360 312840

Web - [www.amsscotland.co.uk](http://www.amsscotland.co.uk)

Email - [info@amsscotland.co.uk](mailto:info@amsscotland.co.uk)

**WALKERSWAYS** Start planning your walking holiday now!

- Self-guided long distance walking holidays on the West Highland Way & the Rob Roy Way in Scotland
- Quality accommodation in Hotels, Guest Houses & B&Bs
- Door to Door luggage transfers
- Full information pack with personal itinerary & guide book with map

Fill in the on-line booking form at [www.walkersways.co.uk](http://www.walkersways.co.uk)  
e-mail us at [info@walkersways.co.uk](mailto:info@walkersways.co.uk)  
T: 01838 400 338 or 07971 815248



# GREAT GLEN WAYFARER

www.westhighlandwayfarer.co.uk 2016

## ARE YOU THINKING OF A BOATING HOLIDAY IN SCOTLAND?



### Charter a Luxury Cruiser or Yacht on the Caledonian Canal

Boating holidays in Scotland offer a fabulous way to see Scotland's magnificent scenery from the water. West Highland Sailing can offer you a holiday you will never forget on the beautiful Caledonian Canal.

We have a large fleet of yachts and cruisers offering you a boating holiday with no tides and simple navigation.

As the cruising range is restricted to non-tidal waters between Inverness and Fort William, previous boating experience is not essential. The Canal has a variety of shipping, with seagoing vessels taking the Canal route across Scotland. We have a choice of both Cruisers and Yachts.



### Call for further information.

West Highland Sailing, Laggan Locks,  
Spean Bridge, Fort William

**01809 501234**

[www.westhighlandsailing.com](http://www.westhighlandsailing.com)



## Glenmoriston Arms Hotel

Invermoriston IV63 7YA

Tel:

**01320**

**351206**

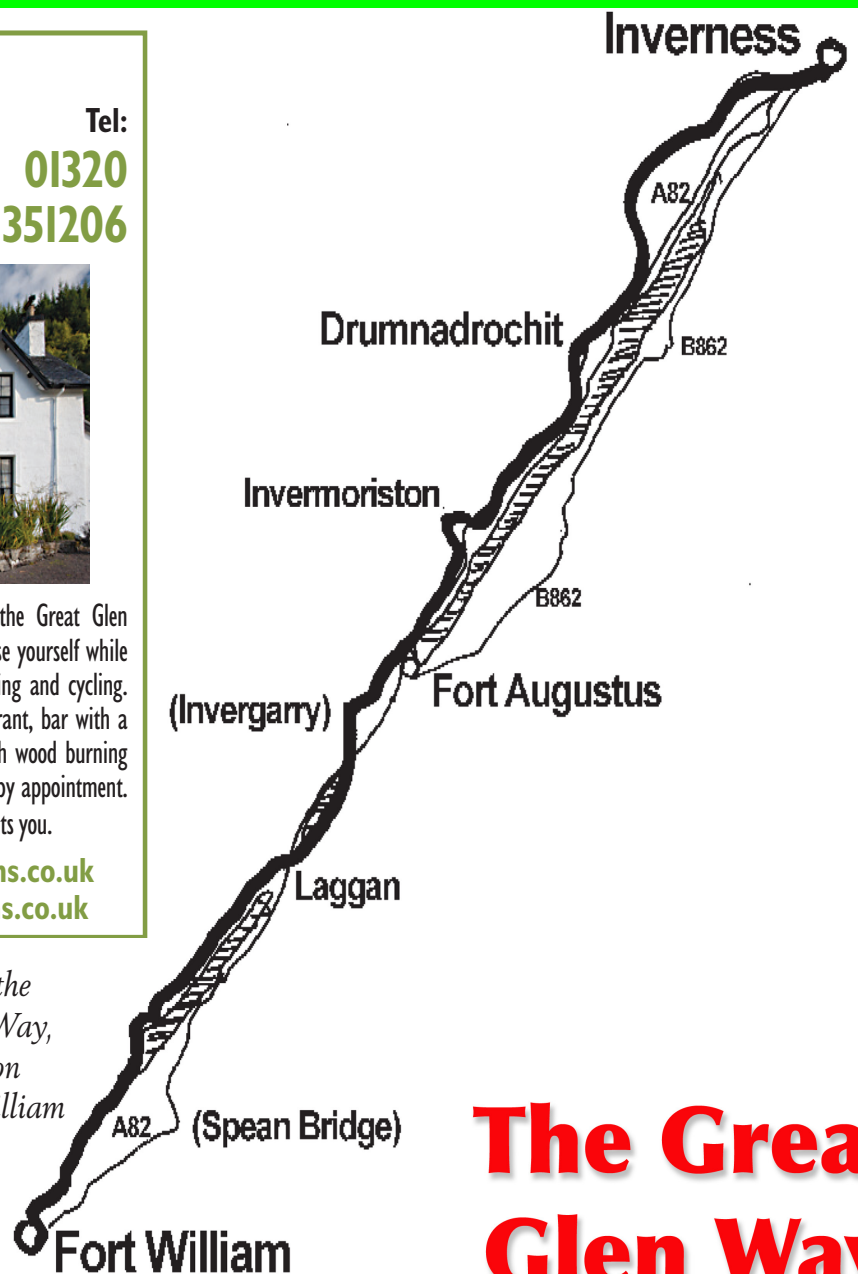


Traditional family-run Highland Hotel situated on the Great Glen Way. Close to Loch Ness and the ideal location to base yourself while touring the area. Popular for walking, shooting, fishing and cycling. Ten bedroom en suite accommodation, quality restaurant, bar with a great selection of over 100 malt whiskies, lounge with wood burning stove, therapeutic and remedial massage treatments by appointment. Free WiFi and parking. A warm welcome awaits you.

Email: [admin@glenmoristonarms.co.uk](mailto:admin@glenmoristonarms.co.uk)

Website: [www.glenmoristonarms.co.uk](http://www.glenmoristonarms.co.uk)

The route of the  
Great Glen Way,  
which leads on  
from Fort William  
to Inverness



## The Great Glen Way

## The Story of the West Highland

*The 1940s LNER guide to the line reprinted,  
with additional colour illustrations*

Northern Books from Famedram £4.95

[www.northernbooks.co.uk](http://www.northernbooks.co.uk)

## SELF-GUIDED WALKING HOLIDAYS

[www.WalkAcrossScotland.co.uk](http://www.WalkAcrossScotland.co.uk)

Tel: +44 (0)7950 931 345

*At WAS, we listen to the needs of our clients, creating  
walking packages which reflect the personal, friendly  
and professional nature of our service.*



WALK ACROSS  
SCOTLAND

YOUR PATHWAY TO THE REAL SCOTLAND

- Pre-Booked Accommodation
- Baggage Transfers
- Daily Itineraries
- Maps & Guides

## MAPS

WEST HIGHLAND WAY

THE MALLANG LINE • THE KYLE LINE  
£2.00 each, sent post free  
or from local outlets  
Famedram, PO Box 3,  
Eilon AB41 9EA  
[maps@famedram.com](mailto:maps@famedram.com)

### The Eagle Barge Inn, Restaurant and Pub



The Eagle is moored at Laggan Locks on the Great Glen Way. We are open for lunch and evening meals, teas coffees and real ales etc.. Bookings strongly advised for evening meals, seafood specialist. Check out [www.eaglebargeinn.weebly.com](http://www.eaglebargeinn.weebly.com) We look forward to seeing you.

### Lady Andorina, our 'Wee Floating Bunkhouse'



Lady Andorina is a 70ft Ketch built for a Spanish Count in the 1951. She is now our floating bunkhouse and the cabins have twin bunks in. The inside is either polished mahogany, oak or cherry, depending which cabin you're in. She is moored next to the 'Eagle' above, so you don't even have to leave the GGW to eat and bed down!!

Check [www.andorina.co.uk](http://www.andorina.co.uk)

Bookings & enquiries for both 07789858567